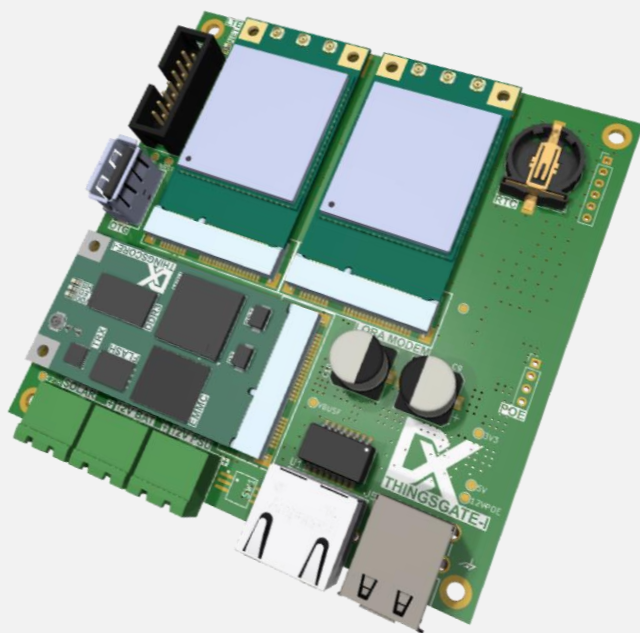


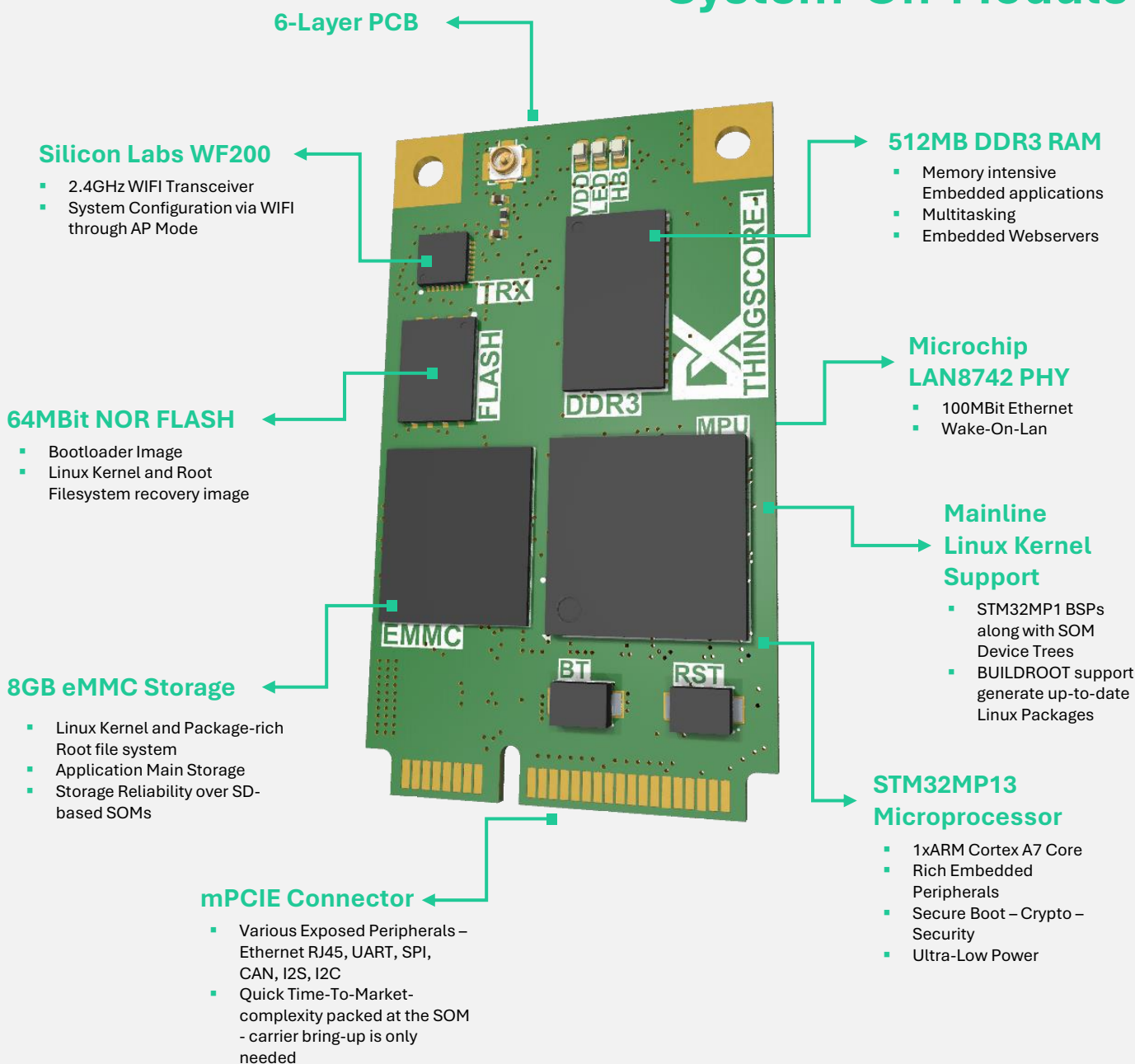
DREAMXLABS

Proper infrastructure forms the foundation of smart cities and the Internet of Things, supporting innovation, sustainability and improved quality of life through connected and intelligent urban systems.



THINGSORE 1

Linux Based System-On-Module



Applications:

- Industrial Automation
- IoT Gateways
- Low-Power Linux-Based Embedded Applications
- Smart Home

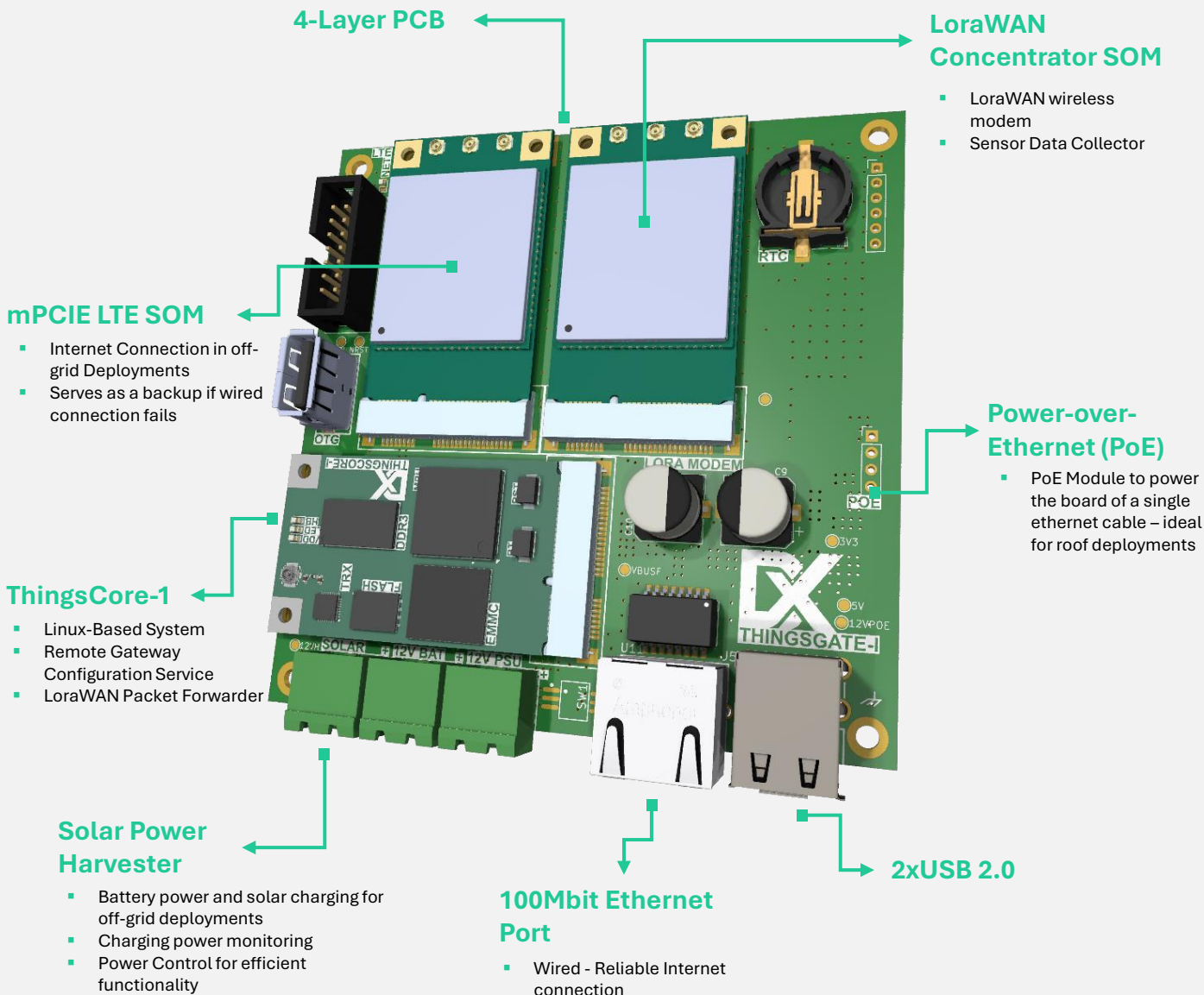
The **DREAMXLABS ThingsCore-1** System-On-Module offers a ready-to-use Low-Power Embedded Platform to kickstart your IoT Gateway, Industrial Automation and Low Power Linux-Based Application.

The mPCIe form factor and ready to use schematic and PCB libraries, offloads huge complexity and accelerates your product development.

THINGSGATE 1

LoraWAN

Gateway



Applications:

- IoT Gateways
- Smart Cities
- Environmental Monitoring
- Industrial Automation
- Smart Home

The **DREAMXLABS ThingsGate-1** Gateway motherboard serves as the middleman between deployed sensors and the cloud – enabling data collection.

The modular design enables efficient deployment and maintenance while fully packed functionality like PoE, Solar Harvesting and LTE Connectivity enables wide range, off-grid and 24/7 IoT network operation.

LRS NODE 1

IoT Sensor End Node

STM32WL SOC

- ARM Cortex M4+ Core
- On-chip LoRaWAN Radio
- Ultra-Low Power

Power Variants

- LI-Ion Rechargeable battery with solar harvester and panel
- 3xAA Batteries for non-charging sensors

Low Power

- Ultra Low Power LDO regulator
- Power-On switching only on the measurement phase
- Minimal Deep Sleep power dissipation

SPV1050 Power Harvester

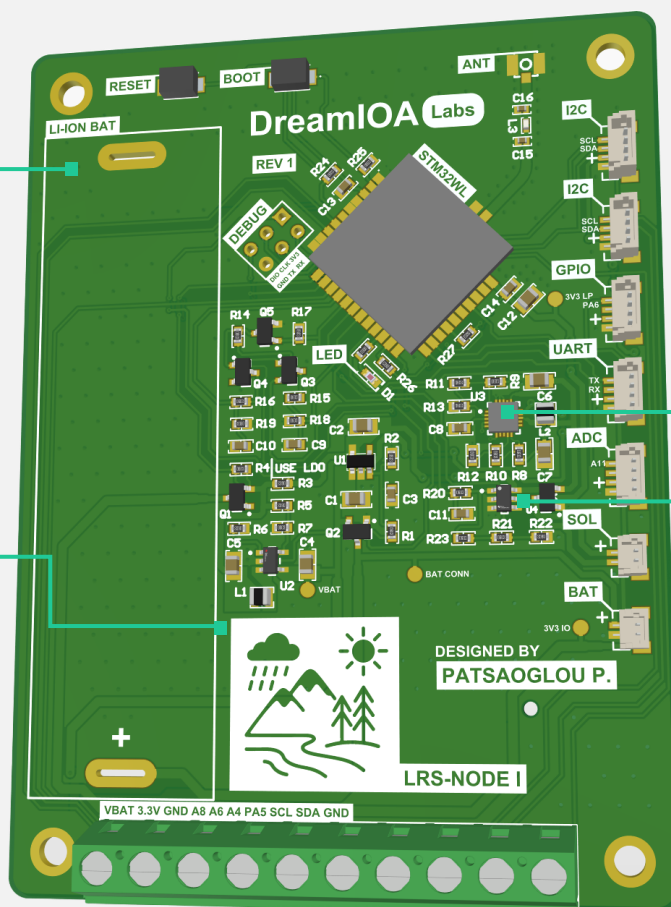
- MPPT Control
- Charging Current up to 70mA
- Ultra-Low Power

Power Status Sensor

- Battery Voltage Sensor
- Solar Voltage/Current Sensor

Various IOs

- Various exposed IOs to support a wide variety of different sensor types
- Covers different deployment requirements with minimal maintenance effort

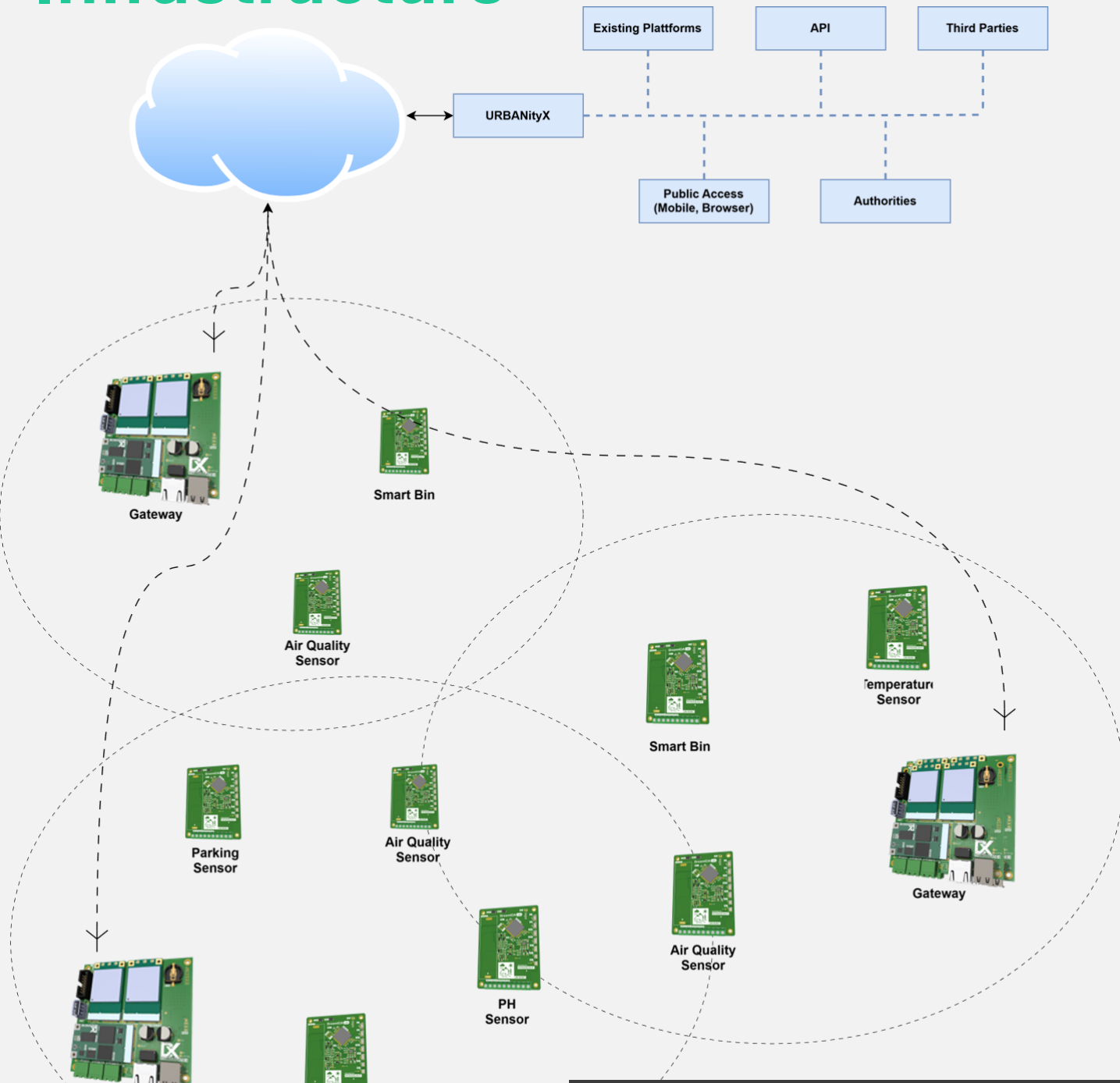


Applications:

- Smart Parking
- Smart Metering
- Environmental Monitoring
- Smart Bins

The **DREAMXLABS LRS Node 1** is a general purpose LoRaWAN node that can be connected with PH-Meters, Temperature, Humidity, Pressure, Proximity, Strain gauges, air quality and accelerometer sensors achieving monitoring and smart city requirements. Designed using ultra-low power electronics, it can work for several years without intervention while solar harvesting extends battery life even more

URBANityXLabs Infrastructure



Services:

- Data availability
- Third party services for Citizens
- Intelligent City Management
- Smart Things

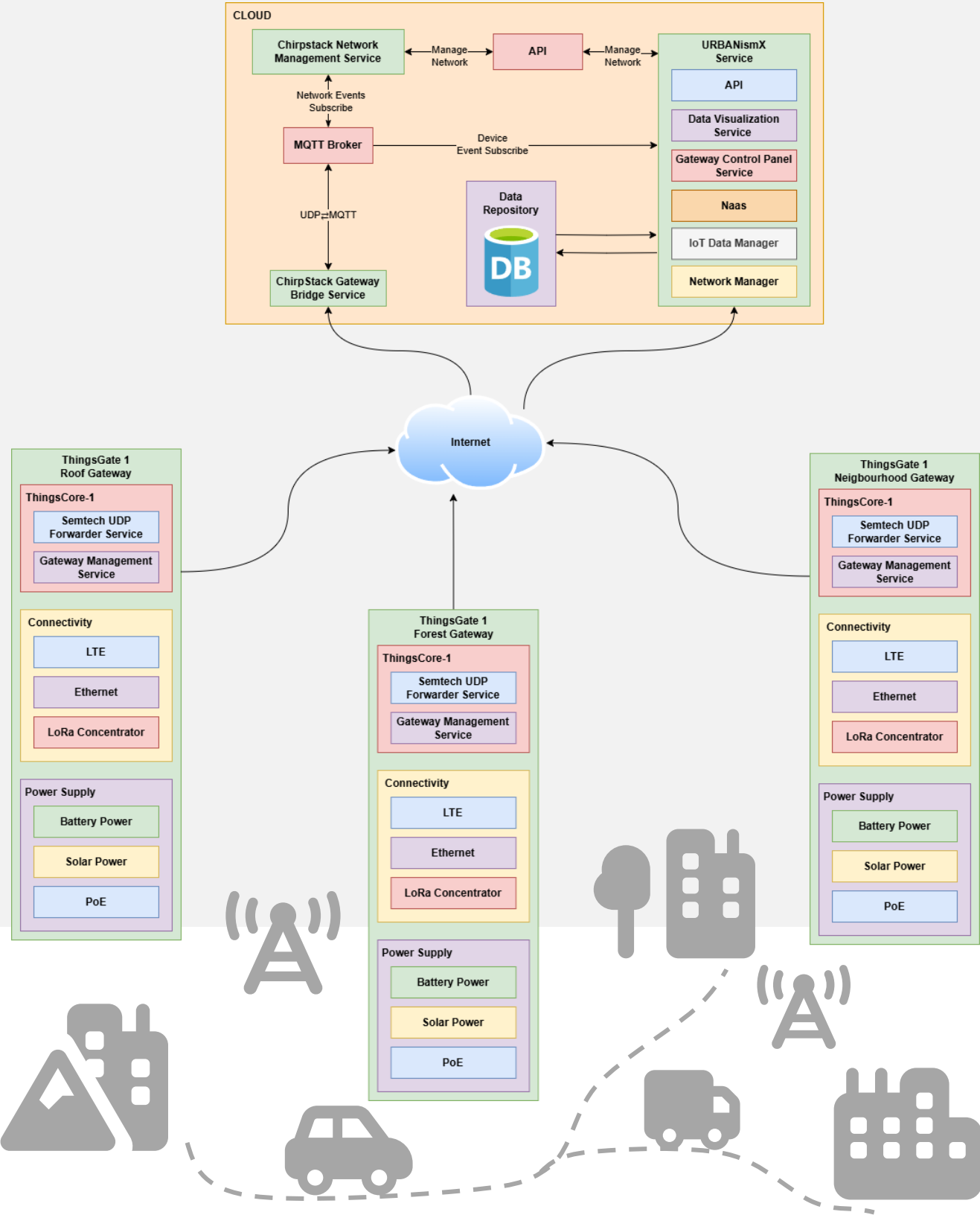
The **DREAMXLABS URBANity** platform offers an all-in-one solution for Internet of Things and next-generation intelligent cities.

Integrating advanced hardware, software and edge technologies, the system is formed to achieve robust connectivity, sustainability and efficiency for People and city management.

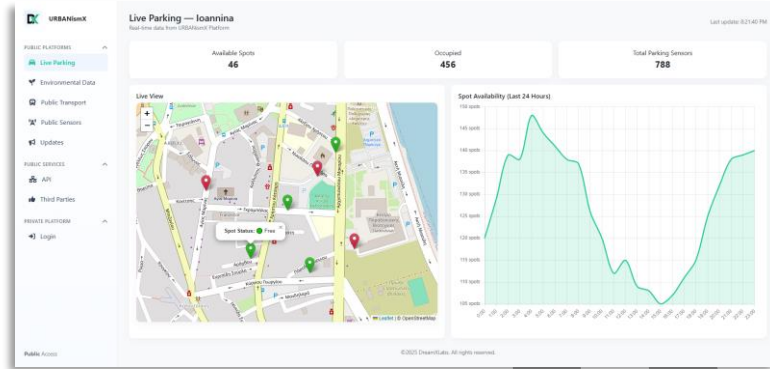


URBANityXLabs

Architecture



URBANityXLabs Platforms

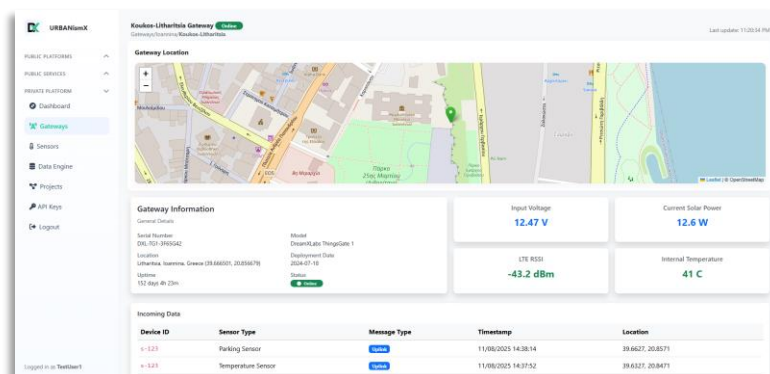
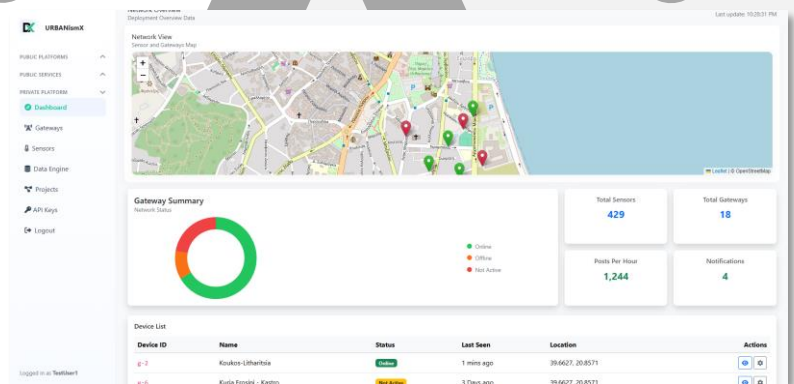


Public Platforms:

- Data Visualization
- API for Third-Party Data usage
- Public Sensor Network Visualization
- Authority notification

Private Platform:

- Network Status
- Deployment Health Monitoring
- Private Data Access
- API for third party access



Deployment Management:

- Gateway Registration
- Sensor Registration
- Project Grouping
- Remote physical infrastructure health and configuration



DreamXLabs

Hardware Development Services
We make your smart product concept a reality.